

## Instructions for Use

### 1. Secure U300 HotDog Patient Warming Mattress to the Operating Table

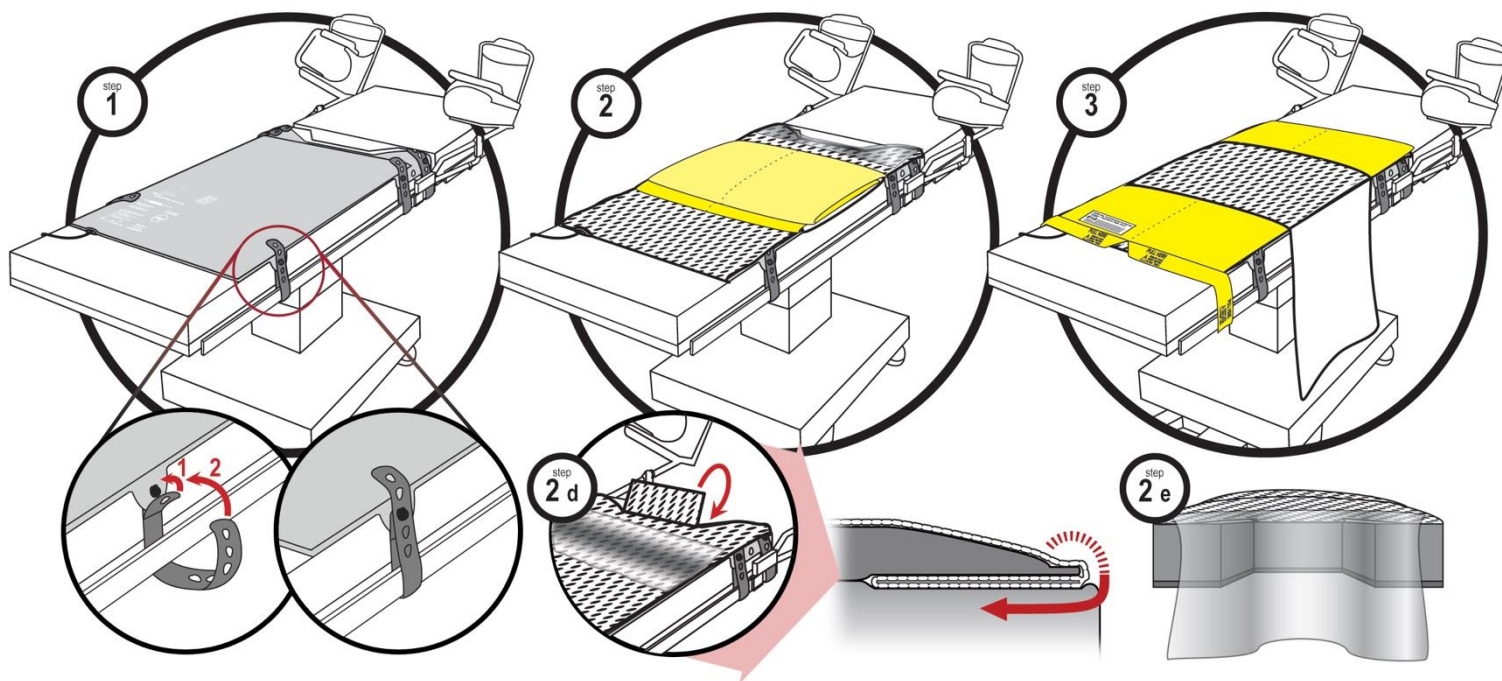
- Place U300 Mattress on operating table with sensor and cable toward head end.
- Align the perineal cutout on the warming mattress with that of the operating table.
- Attach mattress to side rails using **4 or 6** straps as shown.

#### A301 Kit Contents

- (1) – BackSaver Slide Sheet
- (1) – WaffleGrip Anti-Slip Pad
- (1) – Draw Sheet with WaffleGrip
- (1) – Chest Strap

### 2. Align and Secure WaffleGrip Positioning System.

- Place folded A301 Kit on the HotDog warming mattress as shown on label, and unfold non-slip WaffleGrip pad.
- The sealed lines on WaffleGrip should be aligned with the edges of the warming mattress.
- Feed mattress cable through pad porthole and fold excess WaffleGrip material under U300 mattress.
- IMPORTANT**— at the perineal end, TUCK REINFORCED PLASTIC FLAP ON WAFFLEGrip BETWEEN WARMING MATTRESS AND OPERATING TABLE MATTRESS [see cross-section]. Flap should not be visible or hanging amongst perineal cutout. Tuck remaining Waffle Grip pad (beyond fold lines) under warming mattress.
- Ensure that the perineal drape (plastic material) at the perineal end is draped and hanging over the perineal cut-out to prevent fluids from leaking under the warming mattress. **IMPORTANT:** if the plastic is under the patient it prevents WaffleGrip from performing and the patient could slip in Trendelenburg.



### 3. Align and position the BackSaver™ Slide Sheet

- Unfold the yellow Slide Sheet over the WaffleGrip pad.
- Tuck the head-end of the Slide Sheet under the Warming Mattress to secure in place.
- Ensure that the pull tabs are hanging off the side of the operating table for easy removal.
- Position the draw sheet in the center of the Warming Mattress with the grip side facing up.

### 4. Initiate Patient Warming

- Connect the U300 Warming Mattress to the HotDog Controller using A112 blue cable. Select temperature.
- See Warming Mattress IFU (PN 2064) and Controller IFU (PN 2135) for instructions on operating HotDog patient warming mattress.

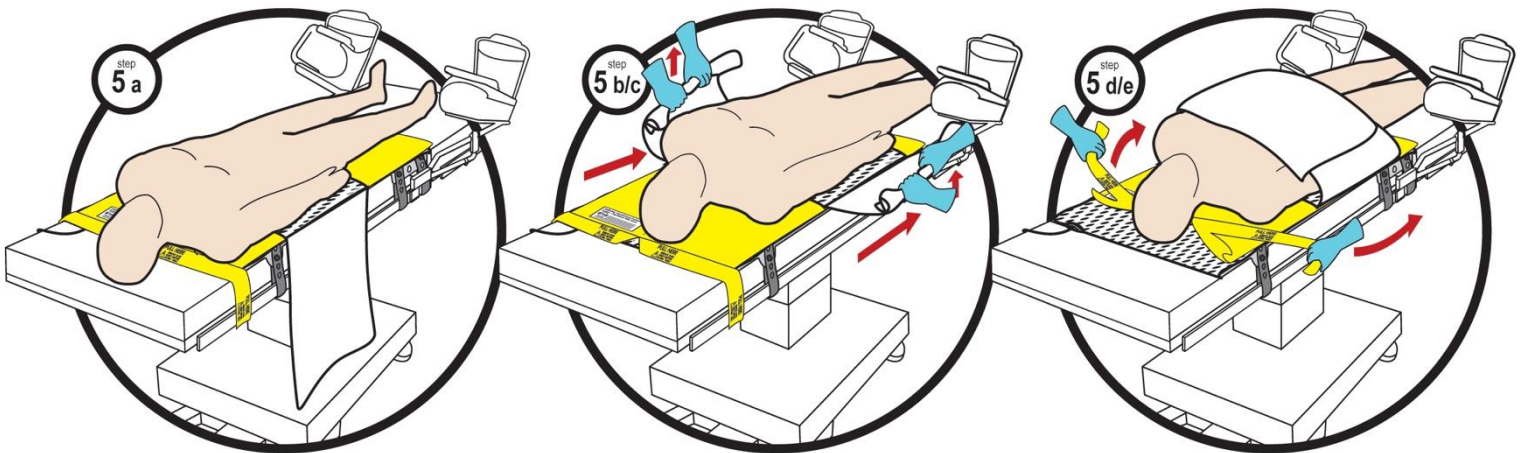
## 5. Maneuver and Position the Patient

- During prep, the patient should lie on top of the slide sheet and draw sheet.
- To reposition the patient, one person on each side of the table must grab the draw sheet securely with two hands.
- Use the draw sheet to apply upward pressure and slide the patient down the table. Follow institutional protocol for supporting the legs and head/neck.
- Once the patient is properly positioned for lithotomy, place draw sheet ends over the patient for slide sheet removal.
- REMOVE the Slide sheet by pulling on the two tabs at the head end. Be sure to completely remove the slide sheet, which will tear down the perforation in the middle.



**IMPORTANT**—Slide Sheet MUST BE REMOVED PRIOR TO TILTING THE TABLE OR SERIOUS INJURY MAY RESULT.

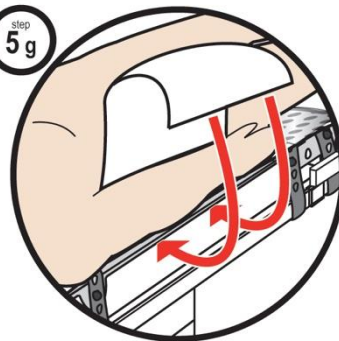
- Check the draw sheet to ensure it remains flat under the patient.
- Secure arms with the draw sheet as shown or per hospital positioning protocol.
  - Align ends of draw sheet between patient's torso and arm, and wrap arms to secure.
  - Tuck excess material **between the U300 Warming Mattress and operating table mattress** to hold in place.



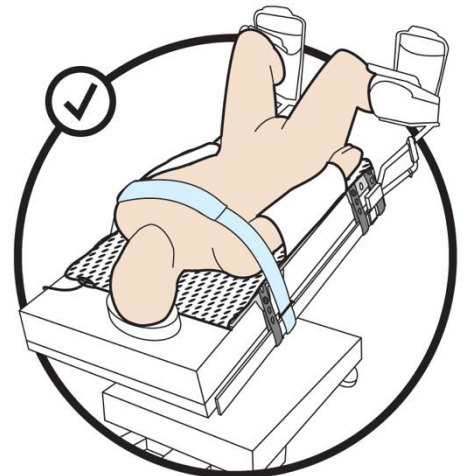
**IMPORTANT** – PATIENT MUST BE IN DIRECT SKIN CONTACT WITH WAFFLE GRIP to prevent slipping in Trendelenburg.

- Secure Strap across patient's upper chest by looping straps under side rails and feeding through metal brackets on each side. Strap can be used to help secure HotDog warming blanket.
- See separate instructions for most effective HotDog Patient Warming Blanket positioning during Trendelenburg cases.

step 5 g



✓



### USE ONLY AS INDICATED

**ATTENTION:** Waffle pattern will be temporarily visible on skin, but will dissipate shortly following procedure.

### IMPORTANT:

- Do not use lubricants, oils or powders on patient's skin in contact with Waffle Grip. Wipe skin with alcohol if any exist. (A decrease in friction will reduce the non-slip capability of the pad)
- Not designed for use in Reverse Trendelenburg.



Augustine Temperature Management, LLC  
Eden Prairie, MN 55344 USA

[www.hotdogwarming.com](http://www.hotdogwarming.com)

Ph: 952-465-3500